

# Westpark Elementary

## ACE Summer Session 2011

Session Dates: August 16<sup>th</sup> – September 22<sup>nd</sup>  
 Online Registration: Begins August 4<sup>th</sup>

### What is the ACE program and what are ACE classes?

The ACE Program (Afterschool Classroom Enrichment) is a program sponsored by IPSF (Irvine Public Schools Foundation) in cooperation with the Irvine Unified School District.

IPSF selects contractors who teach all types of classes ranging from sports to academics to arts and, through volunteers at each school, offers these classes after regular school hours for nominal fees. There are classes for many ages and are held weekly in 6 to 8 week sessions.

Registration will be online only at [www.ACEwise.org](http://www.ACEwise.org) beginning Thursday, August 4<sup>th</sup>. Please be sure to update student information if you have registered in the past. Instructions for creating an online account are on page two of this brochure. All classes will start the week of August 8/16 and will run for 5-6 weeks.

**TUESDAY**

### Academic Chess

Academic Chess Institute-Perfect for all levels. An experienced chess master teaches chess concepts in a fun way to help your child develop critical thinking and memory skills, confidence, sportsmanship, patience, and problem solving.

*Tuesdays 8/16, 8/23, 8/30, 9/6, 9/13, 9/20*



Academic Chess

Grades: K – 6

Time: Tue. 2:30 – 3:30

8/23 1:15 – 2:15

Class Fee: \$109

**WEDNESDAY**

### BASKETBALL

The Basketball Camp is committed to the development of basic fundamental skills through quality instruction. The Camp's focus is on repetition, teaching solid skills, promoting individual and team concepts, teaching and self-discipline. Campers learn ball handling, triple threat, post moves, rebounding, court spacing, passing, defensive keys, and offense and defense from experienced players and coaches. Sessions consist of lectures, learning stations, games, and various contests. Players are placed in groups according to age and skill level.

*Wednesdays 8/17, 8/24, 8/31, 9/7, 9/14, 9/21*



Basketball

Grades: K – 6

Time: Wed. 1:15 – 2:15

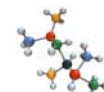
Class Fee: \$124

**THURSDAY**

### Mad Science - Molecule Mania

Discover the science behind magnet magic and magnetism mysteries! Watch as a twisting coil climbs up and down without moving, and a towel turns into a dog! Get hands-on with magnifiers, model tongues, and mirrors to see what your own tongue looks like. Feel the force of electricity and role-play molecules of sounds! Take home a science experiment every class!

*Thursdays 8/18, 9/1, 9/8, 9/15, 9/22*



MAD Science

Grades: K – 3

Time: Thu. 2:30 – 3:30

8/25 NO CLASS

Class Fee: \$115

## ***Classroom Monitors Wanted!***

**We need your help!**

**Would you be willing to help monitor ACE classes 1 to 1½ hours per week? Volunteers who monitor receive discounted tuition for each day they monitor. The work is easy - take roll, make sure children are accounted for, assist where necessary, and see that all children are picked up after classes. For more information, contact Stephanie Bynon at [sbynon@ipsf.net](mailto:sbynon@ipsf.net)**

**Parents: Please remember that monitors are volunteers and cannot leave until the last child goes home. Please be courteous and pick up your child on time. IUSD has a strict policy of no children on campus after 4:00.**

### **GENERAL INFORMATION**

#### **How to Register**

Registration begins August 4 for classes starting the week of Monday, August 15, 2011. Registration will be done on a first come – first serve basis and enrollment is subject to class availability. Irvine students are eligible to attend ACE classes at any ACE school.

**Register online at [www.ACEwise.org](http://www.ACEwise.org)**

- A. Log onto [www.acewise.org](http://www.acewise.org)
  - B. Click on "Parents"
  - C. Click on "Create New Profile" to create a log-in and password for yourself.
  - D. Once you have successfully created a parent profile, you will be directed to log in.
  - E. Click as directed to register a new student. You will need to create a student profile for each child.
  - F. To continue enrolling, click on enroll.
  - G. Select the class your student is enrolling in.
  - H. You may either check out or continue enrolling in another class.
  - I. After successfully checking out, you will receive an email receipt listing the class(es) in which your student is enrolled.
  - J. To enroll another child, go back to the Home Page and log in again.
- If you are unable to complete, or uncomfortable with, the online registration process, please send an email to [ipsf.ace@gmail.com](mailto:ipsf.ace@gmail.com).

**Refunds: Tuition is nonrefundable unless the class is cancelled by ACE.** If your child registers late, misses classes, or withdraws before the end of the session, you are still obligated for the full fees for that session. You are eligible for a prorated tuition refund or credit only if your child with-draws due to serious illness or injury, corroborated by a note from your child's doctor. All refunds are subject to a \$25 non-refundable program fee. Please be advised that refunds may take up to one month to process. If you wish to apply for a refund, please email [ipsf.ace@gmail.com](mailto:ipsf.ace@gmail.com).

**Flex Accounts:** Receipts for dependent care documentation are available on request. Please contact IPSF at (949) 812-7224 with parent name, child's name, address, phone number, and location of ACE class attended.

**Class Age Limits:** In order to develop classes suitable for a particular age range, we specify age limits in the brochure. However, exceptions are possible since children display different levels of maturity and ability. Please email [ipsf.ace@gmail.com](mailto:ipsf.ace@gmail.com) if your child is interested in a class but doesn't fit the printed age profile.

**Class Confirmations:** Everyone who registers will be notified by e-mail. To ensure that you receive our messages, please add [ACEccenrollment@ipsf.net](mailto:ACEccenrollment@ipsf.net) to your address book.

**Class Cancellations:** We do our best to accommodate all students who sign up for ACE classes. In order to keep class fees as low as possible, we must set a minimum enrollment number for each class to cover the class expenses. If the minimum enrollment is not met, the ACE Program reserves the right to cancel the class and return all registration fees. You will be notified of any cancellations before the first scheduled day of class.

**Transportation:** Getting students to and from class is the responsibility of parents. In the first week of classes, ACE site monitors will attempt to locate registered students who are not present in their class. After that week, however, we expect that the students will know where they should go. If your child has difficulty remembering to go to class, you might want to escort him/her or contact another child in the class so your child has a "buddy" to provide a reminder about class.

**ACE students must be picked up immediately after class.** Arranging pick up is the responsibility of parents. School staff, ACE instructors, and ACE volunteer monitors are not responsible for your child after class. After class dismissal there will be a five-minute grace period for pick-up. If this timeframe is not met you will be asked to leave the program.

**Snacks:** Your child is always welcome to bring a personal snack. Snacks will not be provided by ACE. Please email [ipsf.ace@gmail.com](mailto:ipsf.ace@gmail.com) immediately if your child has severe food allergies.

**Conduct:** Normal classroom conduct is expected of all ACE students and we generally have very few problems with the behavior of our students. Children displaying unacceptable behavior will be issued a "Behavior Citation." If a second citation is necessary, the child must speak to the school principal and may be dismissed without refund. Likewise, if a parent displays unacceptable behavior, his or her child(ren) may be dismissed immediately and without refund.

**Scholarships:** A limited number of scholarships are available for all classes, based upon need. Evaluation criteria include eligibility for free and reduced lunch and referrals from school staff. Parents may apply for a scholarship covering up to one-half of the tuition fee. Application forms are available by emailing [ipsf.ace@gmail.com](mailto:ipsf.ace@gmail.com).

**Program Sponsorship:** Irvine Public Schools Foundation (IPSF) sponsors the district-wide ACE program in cooperation with the Irvine Unified School District. For further information about the ACE program at other schools, please call IPSF at (949) 265-6411.

**QUESTIONS? SUGGESTIONS?** Send an email to [ipsf.ace@gmail.com](mailto:ipsf.ace@gmail.com).