



BEE Informed Online!

eNewsletter of the Bonita Canyon PTA

Thursday, November 10, 2011

Dec 2	F	Astounding Inventions in MPR 8:00 a.m.-3:00 p.m.
Dec 7	W	Bake Sale at Chaparral Park 1:30-3:00 PM
Dec 8	Th	Gr. 3 Field Trip 8:15 a.m.-12:15 p.m. "Gabrielino Walk"
Dec 14	W	Multicultural Club Winter Party
Dec 16	F	1:00 PM EARLY DISMISSAL – KINDER ON SPECIAL SCHEDULE
Dec 19-Jan 2	M-F	Winter Break - School Resumes Tuesday, January 3, 2012
Jan 4	W	Reflections Art Gallery
Jan 25	W	Art Masters O'Keeffe

Does Supporting IPSF Help Bonita Canyon? People sometimes ask "Does supporting the Irvine Public Schools Foundation help my child?" The answer is "Absolutely!" Without IPSF support, BONITA CANYON SCHOOL would be a different place.

- Imagine larger reading groups due to fewer instructional assistants
- Think about the loss of elementary music classes that inspire and shape young minds
- Picture a year without ACE classes and K-8 Summer Enrichment Academy to reinforce learning
- Consider your child losing the opportunity to excel in the Science Fair or Honors Concert



Your generous support of IPSF makes these programs possible, at our school and every school in IUSD. We want them to continue, but we need your help. Donations made to the Irvine Public Schools Foundation by December 31 will directly impact the level of support for these programs at Bonita Canyon next year. There are only **four weeks left** until the end of the year. **Will you please consider making a donation to IPSF?** Every donation makes a difference. Every family's support is needed. Please go to www.ipsf.net to make a donation, or print the attachment to this newsletter!

P.S. Did you know that your donation to IPSF will be matched dollar for dollar through the City of Irvine of Irvine's challenge grant? Make your money work twice as hard for our schools by giving to IPSF.

COFFEE & CONVERSATION All parents are invited to join this informal gathering in the Multi-purpose Room on **Tuesday, December 13, 10:30-11:30 a.m.** Principal Bob Curley will update you on the latest at Bonita Canyon School and he invites your input, questions, comments, etc. The *Dads & Donuts* gathering was well received, so the principal is offering this venue and invites all parents to come and enjoy a little coffee, treats & conversation!



SCHOOL NEWSLETTER TO BE EMAILED MONTHLY!

Bee Informed is now emailed on the first Thursday of each month. Be sure to send submissions to shaloor@yahoo.com no later than 8:00 a.m. on the last Monday of the preceding month. The Bee Informed is a wonderful way to open dialogue with your child regarding PTA, School and District events, announcements, and more! Print a copy and share the news with them tonight.

BOOKFAIR VOLUNTEERS....A Huge THANK YOU! More than 30 volunteers worked over 40 hours to make this fall's Book Fair a great success. Students, parents, teachers and staff **purchased nearly \$12,000** worth of books, erasers, pens and posters to support reading and Bonita Canyon! Special thanks to the Book Fair Committee, Kimberly Bova, Julie McCarthy, Julie Hart, Leslie Tolan, and from the Library, Anne Marquand and Kristie Hickok.

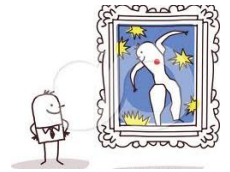
Astounding Inventions Returns to BC / Parents Invited! Science Teacher, Erin Lane, will host Astounding Inventions in the MPR on **Friday, December 2**, from 8:00 a.m.-2:00 p.m. Students participating in this event are to bring their project to the MPR at 8:00 a.m. to set up on display. Judging will take place during the day and classes will visit as well to view the inventions. Students with entries are to pick up their projects at 2:45 p.m. to take home.



Bake Sale at Chaparral Park to Support Girl Scouts Bring a few dollars or spare change on **Wednesday, December 7, and stop by Chaparral Park 1:30-3:00 p.m.**, to choose from a delicious assortment of baked goods. Troop 460 will donate 50% of the proceeds to the Second Harvest Food Bank!

Multicultural Club Winter Party December 14 It's time to celebrate with friends! BC parent, Emma Chu will be our hostess. We will meet from 10:00 a.m. to 12:30 p.m. This will be a pot-luck brunch, with a gift exchange. The minimum limit for the gift is \$20.00. Everyone is welcome to join the party and the gift exchange. Please RSVP to Emma by Dec. 9 via email yiweichu@yahoo.com. See the school directory for her home address. See you all there!

Reflections Art Gallery Mark your calendars. The Reflections Art Gallery will be open for viewing on **Wednesday, January 4, 2012** in the MPR from 8am to 2pm. All participants will be honored at an award ceremony at 1:45pm



Bonita Canyon 2011-12 Spring Fundraiser...

**Hollywood Nights
March 9, 2012
at Strawberry Farms**

Mark your calendar for a fabulous evening for BC parents. ...

There are many opportunities to volunteer for our largest fundraising event - donations, decorations, etc. Whatever time or talents you can share, we can use. Our first volunteer meeting will be on Thursday, January 12, 10:00-11:30 a.m. in the MPR conference room. Please join us, or contact one of the committee chairs for more information: Angie Schmidt at ar_schmidt@yahoo.com, Maria Dolatkah at modlady2003@yahoo.com, Debra Sussman at debrasussman@cox.net.

PLEASE HELP UP US MAINTAIN A "GERM FREE" ENVIRONMENT AT SCHOOL! To prevent the spread of flu and other illnesses, keep children at home who exhibit symptoms such as fever, tiredness, coughing/sneezing, etc. Children are most contagious at the onset of an illness. **PLEASE DO NOT MEDICATE YOUR CHILD AND SEND HIM OR HER TO SCHOOL!!!** Medication (including over-the-counter medication) wears off in the early morning hours resulting in the child visiting the health office and being sent home. By then, they may have infected other classmates. Children must be fever-free 24 hours before returning to school. **Classrooms are accepting donations of boxes of tissues and containers of disinfectant wipes throughout the year.**



KEEP OUT OF THE PLANTERS Parents, please to be sure they are not playing in the planters near and Mrs. Burger's classroom) or elsewhere. Our has been working diligently to beautify and maintain keeping the little feet and hands from the bushes,



monitor your children when on campus, the front of campus (near the flagpole District Landscape Maintenance crew our school landscape. Thank you for shrubs, and other vegetation.

TOY DRIVE The BC Student Council is sponsoring a Toy Drive now through December 12. Donate gifts (unwrapped) to the office or library. Toys will support local organizations and the *Spark of Love* Fire Department Toy Drive. Thank you for sharing with those in need.

