



CANYON VIEW

elementary

12025 Yale Court, Irvine, CA 92620 949•936•6900 Fax 949•936•6909 DR. SUSAN KEMP, PRINCIPAL

CALIFORNIA DISTINGUISHED SCHOOL, 2002 ❖ NATIONAL BLUE RIBBON SCHOOL, 2004

Principal's Message

Fall, 2011

Dear Canyon View Families,

I am thrilled to announce that Canyon View Elementary School was recently nominated as a California Distinguished School and is expected to be visited by a California Department of Education Evaluation Team in February or March. The purpose of the evaluation team will be to validate the authenticity of our school's signature practices outlined in our application. Since the announcement, we have begun the process of identifying our signature practices and writing the application.

For those of you who may not be familiar with this award, an overview of the program follows. The California School Recognition Program was created in 1985 to publicize and reinforce the priorities of the State Board of Education and the State Superintendent of Public Instruction. The program identifies and honors some of the state's most exemplary and inspiring public schools with the California Distinguished School Award (the award is valid for four years). Although participation is voluntary, the award is highly sought after by schools in all areas of the state. Approximately five percent of California's public schools are selected each year, and no fewer than 40 counties are typically represented.

In order to be invited to apply for Distinguished School honors, schools must meet a variety of eligibility criteria, including designated federal and state accountability measures based on targeted subgroup academic growth and the Academic Performance Index (API) requirements. Elementary and secondary schools are recognized during alternate years. Applications are evaluated by teams of local educators from across the state under the direction of the CDE and school visitations are conducted to validate the accuracy of the information presented in the application. Canyon View was recognized for this award in 2004 and again in 2008. It is quite an honor to be recognized a third time!

We expect the site visitation team will be impressed with our school and that their findings will validate the accuracy of our application. We look forward to officially being named a California Distinguished School and accepting the award on behalf of all our students, parents, and staff.

Sincerely,

Dr. Susan Kemp
Susan Kemp, Ed.D. Principal



CALENDAR OF EVENTS 2011-2012

2011

Nov. 24-25	Th-F	Thanksgiving Holiday
Dec. 6-9	T-F	Holiday Book Fair
Dec. 16	F	Last Day Before Winter Recess – MINIMUM DAY
Dec. 19-Jan. 2		Winter Recess

2012

Jan. 3	T	Student's Return
Jan. 10-13	T-F	6th Grade Outdoor Ed.
Jan. 16	M	Martin Luther King, Jr. Day – NO SCHOOL
Jan. 31	T	5th Grade Mother/Daughter Dessert
February 7	T	5th Grade Father/Son Guy Stuff
Feb. 8	W	"Taste of Canyon View"
Feb. 13	M	Lincoln's Birthday observed – NO SCHOOL
Feb. 20	M	Washington's Birthday observed – NO SCHOOL
Mar. 14	W	Jog-a-Thon
Apr. 2-6	M-F	Spring Conferences – MINIMUM DAYS
Apr. 6	F	Picnic with your Parents
Apr. 6	F	Last Day before Spring Recess – MINIMUM DAY
Apr. 9-13	M-F	SPRING RECESS
Apr. 25	W	IPSF Honors Concert
Apr. 30-May 11		STAR Testing
May 11	F	Teacher of the Year Dinner
May 18	F	Family Fun Night
May 25	F	STUDENT/TEACHER HOLIDAY
May 28	M	Memorial Day – NO SCHOOL
Jun. 7	Th	Open House – MINIMUM DAY
Jun. 8	F	MINIMUM DAY
Jun. 19	T	Field Day
Jun. 18-20	M-W	MINIMUM DAYS
Jun. 21	Th	Last Day for Students/Teachers – MINIMUM DAY
		6th Grade Promotion Ceremony – 11:00 a.m.



Playground Use Before and After School

Remember that supervision on the campus begins at 8:00 a.m. Please do not drop off students before 8:00 a.m. as there is no supervision to ensure student safety! After school there is supervision at the front of the campus only for 10 minutes after each dismissal bell. Students should not remain on campus between the primary and upper grade release times to wait for older siblings without caregiver supervision.



Since we continue to use our outside playground area for instructional purposes, please do not allow your child to play on the outside playground areas or blacktop areas after school. Our upper grade students need to use these areas for P.E. lessons and other activities. For this reason, there is NO supervision on the playgrounds or outside play areas after school. Please help us to reserve our playgrounds, athletic fields and equipment for the upper grade students who are still in school!

CANYON VIEW TRAFFIC SAFETY PLAN



The primary goals of the school's traffic safety plan are to ensure the safety of Canyon View students and to expedite parent traffic to and from school.

PLEASE REVIEW THE FOLLOWING DESCRIPTION OF OUR TRAFFIC SAFETY PLAN AND STRICTLY OBSERVE ITS REQUIREMENTS.

MAJOR TRAFFIC/SAFETY GUIDELINES

1. **NO PARKING LOT ENTRY ON ARBORWOOD.** All morning parent traffic will enter the parking lot at the Yale Court entrance only. Traffic cones will be placed at the Arborwood entrance at 7:50 a.m.
2. **NO PARKING/WAITING IN CAR FOR STUDENTS IN THE RED ZONES.** All curbing alongside school drop-off zones within the parking lot are zoned red. No parking or waiting is permitted in the red-zoned areas. If you intend to do more than momentarily pause to drop-off or pick-up your children, you will be asked to use the school parking lot.
3. **SAFELY USE THE "CANYON VIEW EXPRESS VALET SERVICE".** This student service occurs at the red-zoned, curbside drop-off area alongside the school. (See "Canyon View Express Valet Service" to review parent responsibilities when using this service.)
4. **OBSERVE STAFF AND VISITOR PARKING SPACES.** For your convenience, we have designated visitor parking spaces located near the school. Additional visitor parking is located across the street at the church. Please see Candace in the office for a parking permission flyer.
5. **ON-GOING CHILD SAFETY CONCERNS.**
 - Please do not park on the north side of Arborwood and have your child dash across the street to school amidst the traffic.
 - Please do not double-park in front of the school, requiring children to thread their way through two lanes of cars to get to curbside.
 - Please do not U-turn in front of the school to drop-off or pick-up children.
 - Please do not encourage your child to cross Yale Court amidst the traffic.
 - Please use our crosswalk. If our traffic at the crosswalk decreases we could lose our crossing guard.
 - Please refrain from using your cell phone while driving through our parking lot.

Thank you for making Canyon View School a safe place to be!



IRVINE PUBLIC SCHOOLS FOUNDATION

AMBASSADOR ALERT

November 2011

Help IPSF Raise \$1 Million to Keep Irvine Schools Strong

Our 2011 Annual Campaign is underway, and we need your help to raise \$500,000 by December 31. Every dollar donated will be matched through the City of Irvine's challenge grant and could mean \$1 million for Irvine schools. These funds will make a difference where it matters most – in the classroom. In elementary schools, proceeds from this campaign will pay for instructional assistants, increasing the amount of one-on-one interaction. In our middle and high schools, funds will provide additional staffing hours, thereby reducing student-to-teacher ratios in critical subjects. We hope you will consider a donation of \$1 per day—or \$365- by the end of the calendar year, but donations in any amount bring us closer to our goal. Make your donation work twice as hard—give to IPSF today! Go to www.ipsf.net for more information and to make a donation.

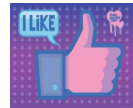


iShop Day at The Marketplace Coming on Saturday, November 19th

Mark your calendars for the 2nd annual iShop at The Market Place (Irvine & Tustin) on Saturday, November 19th! Customers who make purchases totaling \$200.00 or more (cumulative throughout the day) at any stores or restaurants at The Market Place, will receive a **\$20 center gift card**, and The Irvine Company will make a **\$10 donation to Irvine Public Schools Foundation**. Redeem your same day receipts at the Redemption Center near Edwards Theater in Tustin Marketplace. Limit 2 gift cards and two donations per customer, while supplies last. Center gift card purchases not valid towards \$200 total. Please share this great opportunity with your friends and family!

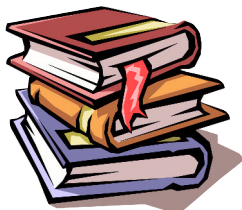
Enter IPSF's Facebook Sweepstakes to Win VIP tix to See Young the Giant

Young the Giant's performance at the 2011 MTV Video Music Awards propelled them to the top of the charts. After touring internationally, the band is partnering with VIZIO to present two Hometown Holiday Benefit Shows for IPSF at the Galaxy Theater. As former IUSD students, the band is committed to IPSF's mission and will donate a portion of the event proceeds to IPSF. Tickets for both nights are SOLD OUT, but you can win two VIP tickets by entering our Facebook sweepstakes. To enter, "like" Irvine Public Schools Foundation on Facebook and complete the form to enter. Sweepstakes ends December 7th.



IPSF's 2nd Annual Spirit of Excellence Gala Makes Profit of Over \$350,000

On October 22, nearly 400 members of the Irvine community attended IPSF's 2nd Annual Spirit of Excellence Gala & Auction at Kia Motors. The IPSF Spirit of Excellence award recipients were recognized for their achievements in the arts, science, music and athletics. The 2011 honorees were Oren Jacob, Chief Technical Officer at Pixar Films, Allen Adham, co-founder of Blizzard Entertainment, Eric Anderson, chameleon actor and musician, and Jason Lezak, Olympic gold medalist swimmer. The City of Irvine received the inaugural Visionary Award for its commitment to education in the Irvine community. IPSF would like to recognize our lead sponsor, Great Park Neighborhoods, as well as all the gala sponsors and guests who came together to celebrate excellence and to raise more than \$350,000 for the students of Irvine Unified School District.



READING COUNTS

Canyon View PTA sponsors Reading Counts, an independent reading program that motivates students to read and reinforces comprehension, vocabulary and fluency skills. Students earn points for successfully completing quizzes based on the books that they have read. The following students are being recognized for reaching a specific goal of 500 points:

Emma Foley
Erin Kim
Bianna Walsh

Katelynn Pi
Ethan Sloate
Luke DeMaio

Irene Fu
Jae Lee
Karenn Samynathan

Matthew Tran
Henry Wu
Harvey Zhou

Letter From PTA President – Robin Sexton

The 2011-2012 Canyon View PTA welcomes you to a great school year! We are proud and excited to enhance our children's education with many programs and assemblies. We are off to an incredible start of the school year. We enjoyed a successful Read for the Record with the donation of 546 books. We raised over 1860 pounds of pennies for Red Ribbon Week which will enable us to purchase some greatly needed sports equipment.

In addition, we have raised over \$48,500 to date during our annual pledge drive which supports so many wonderful programs for the educational enhancement of our students.

We have had an amazing PTA membership drive with over 620 members. It is never too late to join the PTA and we appreciate your past and present support.

The best way to become more involved with PTA and get the latest budget and program information is to join us at our monthly meetings and become a member. Membership information can be found in this newsletter. Please join us for our next meeting on **Monday, November 21 at 8:30 a.m. in the I.R.C.**

Please know that your involvement does make a difference at Canyon View! Thank you for your time and commitment. Feel free to contact me with any questions, concerns or ideas. I truly look forward to working with you and seeing your smiling faces this year.

Sincerely,

Robin Sexton
PTA President
(714) 615-7799
lecourtjester@aol.com



Meet the Masters with Art Masters

The PTA is proud to support the Art Masters program at Canyon View! The Art Masters program is an elementary art education series where students are introduced to great artist during assemblies and followed up by in-class art instruction in the style of the artist. If you have any questions or you would like to assist in the preparation of the materials for this program, please contact Linda Chen at linda1388@yahoo.com.

Box Tops for Education

Canyon View parents, teachers, family members and friends can earn cash for the school by clipping Box Tops coupons from hundreds of participating products. For every 10 Box Tops a student turns into his/her teacher, the student will receive one ticket to be entered into the monthly drawing. Box Tops collections will take place every Wednesday. Please only turn in groups of 10 Box Tops. Monthly drawings and prizes are as follows:

- November – \$5 gift card to Cherry On Top (8 prizes)
- December – Marimix Snack Bags (16 prizes)
- January – \$5 gift card to Cherry on top (8 prizes)
- February – \$5 gift card to Jamba Juice (8 prizes)
- March – Canyon View Water Bottle (16 prizes)
- April – Marimix Snack Bags (16 prizes)
- May – Canyon View Water Bottle (16 prizes)
- June – Grand Prizes

You can also earn Box Tops for Canyon View online through the following website: <http://www.boxtops4education.com/earn/marketplace/default.aspx>. This year's goal is to raise \$2,000 for Canyon View. If every child in the school brought in 40 box tops for the year, the school would earn roughly \$2,800.

Have You Pledged?

PTA enhances the education of every student through a variety of programs and services including classroom and library materials, educational programs, technology, and health/safety. To continue to

offer these valuable programs, we need your help. Canyon View's Annual Pledge Drive is a crucial funding component of the many PTA programs and services that serve our children.



Your contribution will make a great difference to the children of Canyon View and are tax deductible. If you have not yet completed your Pledge Form (included in the first day welcome packet) please take a moment and do so now. Turn in your Pledge Drive Envelope to your child's teacher. Thank you in advance for your generous support and investment in the education of our Canyon View students. If you have any questions, or wish additional information, please feel free to contact our fundraising team: Corrine Mix jmix2@sbcglobal.net or Michelle Weinberg we2weinbergs@yahoo.com.

PTA Membership Reminder

PTA membership envelopes are still being accepted. Dues are \$15 for a family membership and \$10 for an individual membership. Dues may be paid in cash or checks written to Canyon View PTA. Extra membership envelopes are available in the front office. If you have any questions please contact Kelley Arena at kelly.arena@cox.net



Stay Informed with PTA e-mail Updates

PTA e-mails provide up-to-date information on school and PTA events. If you have not received the PTA e-mail and would like them sent to you, please send your email information to canyonviewnews@yahoo.com. This is a great way to keep informed of all the various events throughout the school year!

Canyon View PTA Executive Board 2011-2012

President.....	Robin Sexton
Executive Vice President	Lisa Bergler
Vice President – Fundraising.....	Corrine Mix
Vice President – Programs.....	Linda Ozima
Vice President – Membership	Kelley Arena
Treasurer	Arezoo Abaye
Financial Secretary	Sangeeta Rajpal
Recording Secretary.....	Sonia Doiphode
Auditor.....	Pam Muir
Historian	Rosemary Burcher
Assistant to Fundraising.....	Michelle Weinberg
Corresponding Secretary	Deanna Ikehara
Legislative	Janis Pery
Parliamentarian	Isabelle Mah

PTA Volunteer Committee Chairs 2011-2012

ACE.....	Mrs. Harlow
Affinity/Box Tops	Mike Daniels
Art Masters	Linda Chen, Anita Vuyuru
Book Fair	Christine Adler
Dinner at Your Doorstep.....	Lisa Hopper
Directory.....	Marisa Blam, Jen King
Family Fun Night	Rebecca Lowell
Guy Stuff	Jeff DeMaio
IPSF Liaison.....	Nisha Govind
IRC.....	Susan Caiopoulous
Jog-A-Thon.....	Shirley Wheat
Mother Daughter Tea.....	Mari Fasset
Office Relief.....	Linda Heller
Reading Counts	Cindy Chie, Shireen Vali
Red Ribbon Week	Carole Loye, Elle DeMaio, Heather Lee
Reflections	Yue Wu
Restaurant Night	Corrine Mix, Michelle Weinberg
Room Rep Coordinator	Wendi Bowers
School Supply Packs	Sara Adams
Spirit Wear	Sue Collins
Taste of Canyon View.....	Simona Di Sabatino Krasnow
Teacher Appreciation Week	Tammy Meador, Lisa Hopper
Welcome committee	Peggy Odom
Yearbook.....	Renee Shaffar, Koby Kincaid
6th Grade Promotion.....	Laurie Logsdon