



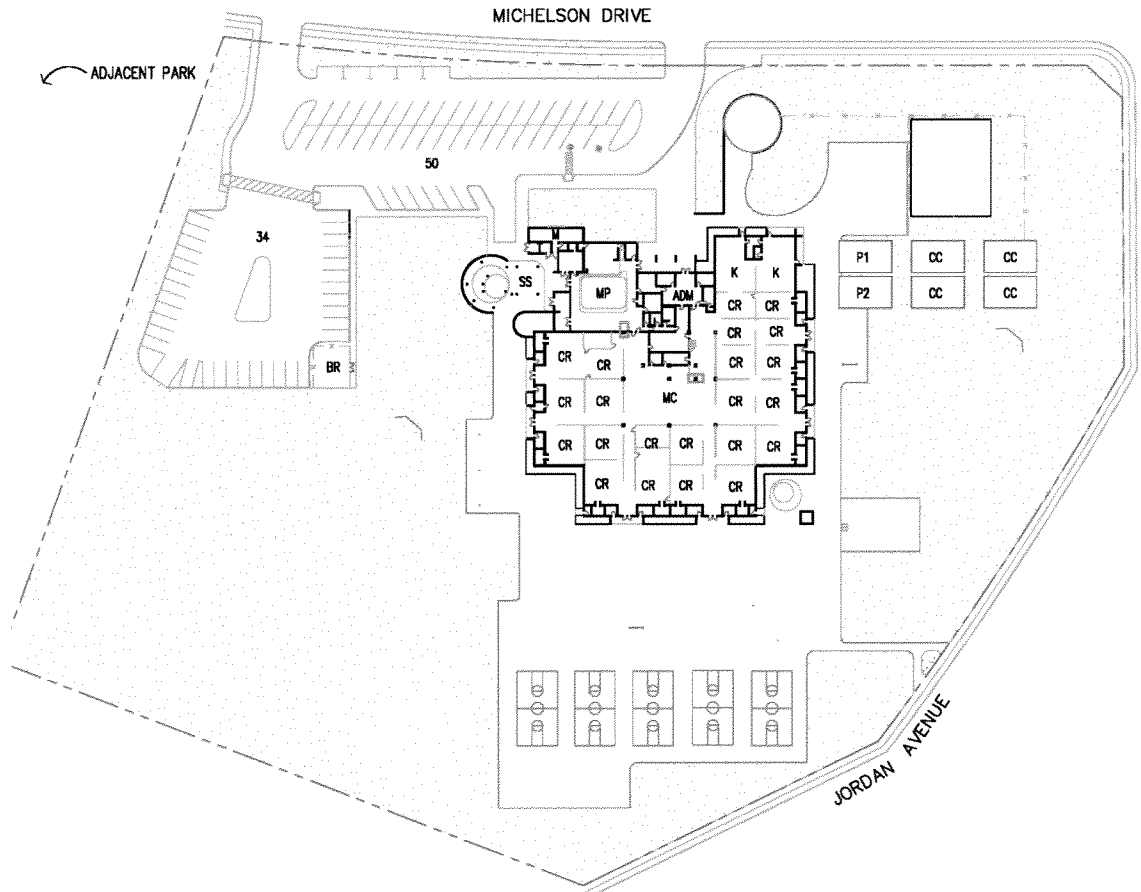
**Irvine Unified School District  
Facilities Master Plan 2006/2007**

SCHOOL : VISTA VERDE MIDDLE SCHOOL (K-8)  
 ADDRESS : 5144 MICHELSON DRIVE  
 IRVINE, CA. 92612  
 DISTRICT : IRVINE UNIFIED SCHOOL DISTRICT  
 BUILDING : SITE PLAN

SITE ACREAGE: 9.12 ACRES

TOTAL PARKING: 84 SPACES  
 HANDICAP PARKING: 2 SPACES

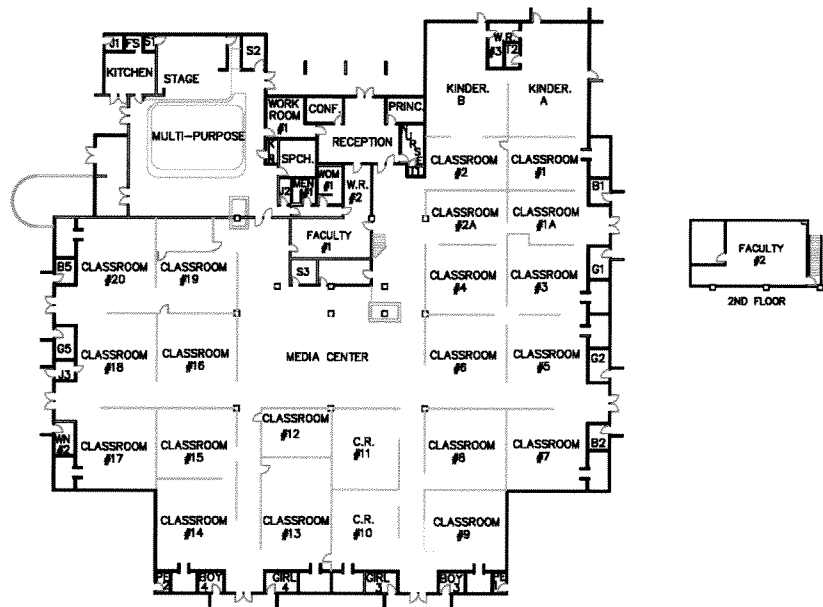
LEGEND	
CR	CLASSROOM
K	KINDERGARTEN
ADM	ADMINISTRATION
MC	MEDIA CENTER
MP	MULTI-PURPOSE
P	PORTABLE CLASSROOM
CC	CHILD CARE PORTABLE
BR	BIKE RACKS
T	TRASH ENCLOSURE
M	MECHANICAL
SS	SHADE STRUCTURE



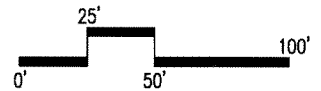


# Irvine Unified School District Facilities Master Plan 2006/2007

SCHOOL : VISTA VERDE MIDDLE SCHOOL (K-8)  
ADDRESS : 5144 MICHELSON DRIVE  
IRVINE, CA. 92612  
DISTRICT : IRVINE UNIFIED SCHOOL DISTRICT  
BUILDING : FLOOR PLANS



BUILDING AREA: 36,925 SF  
SECOND FLOOR AREA: 1,023 SF



I.U.S.D

REVISED BY MNO 3/13/03