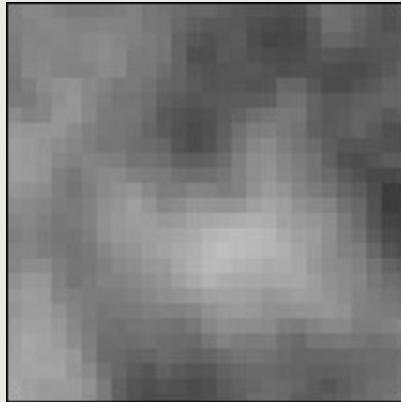


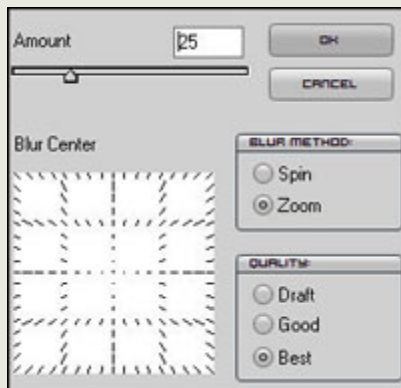
ELECTRICAL CIRCUITS ADVANCED LESSON

(YOU MAY HAVE TO EXPERIMENT TO ACHIEVE THIS EFFECT)

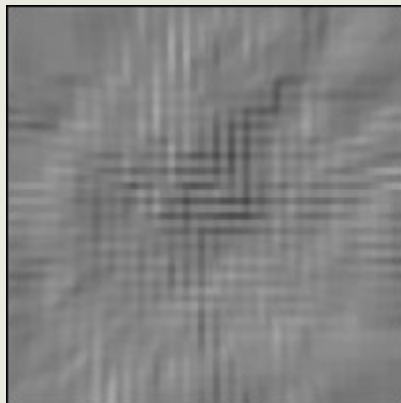
Machines are constantly becoming more powerful, and it is inevitable that one day they will develop intelligence to rival our own. Until then, however, we can merely provide a glimpse into the future with our artwork. The aim of this tutorial is to illustrate how simple it is to create very detailed electrical circuits, using nothing but the default Photoshop filters. If creating sentience was this easy, we'd all be in big trouble...



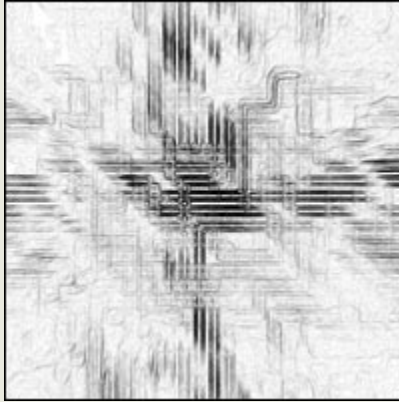
Step 1: Create a blank 400px by 400px document and fill it with a solid black color. Run the **Filter > Render > Difference Clouds** command from the main menu and keep re-running it until you end up with a satisfactory cloud (the clouds themselves are randomly generated each time). Then run **Filter > Pixelize > Mosaic** with a size setting of 12 or 15 pixels, depending on how large you want the circuits.



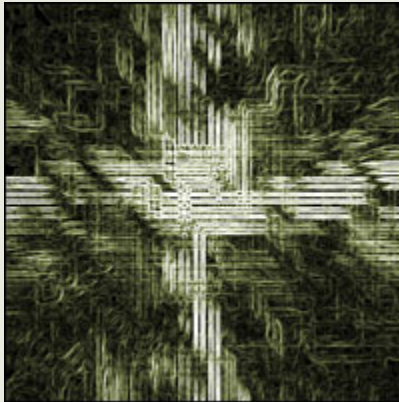
Step 2: Now select **Filter > Blur > Radial Blur** and duplicate the settings on the left. Keep the quality as high as possible, or you'll get pixelation, which is definitely NOT desired in the next few steps.



Step 3: Press OK to render the blur effect, and then run **Filter > Stylize > Emboss** with an *angle* of 135 degrees, a *height* of 2 pixels, and a *strength* of 200%. It doesn't resemble a circuit yet, but the next filter will change all that! Choose **Filter > Brush Strokes > Accented Edges** from the menu, and input a *width* of 2px, a *brightness* of 50, and a *smoothness* of 5.



Step 4: You can finish off the effect by selecting **Filter > Stylize > Find Edges**, which will pick out all the edges and make the circuits far more visible. Now just select **Image > Adjustments > Invert** to reverse the colors, and there you have it - a circuit board of your very own!



Step 5: You should, of course, attempt to personalize this effect a little before you add it to your own creations. To alter the colors, just navigate to **Image > Adjustments > Hue / Saturation**, click on the *colorize* checkbox, and vary the *Hue* setting until you find a color of your liking. Skynet has never looked so plausible...

- Tutorial written by [Man1c M0g](#)



I tried a variation that came out rather well. Instead of radial blur, I blended two layers that had been motion

blurred, one vertical and one horizontal, if that makes sense. Anyway here it is:

